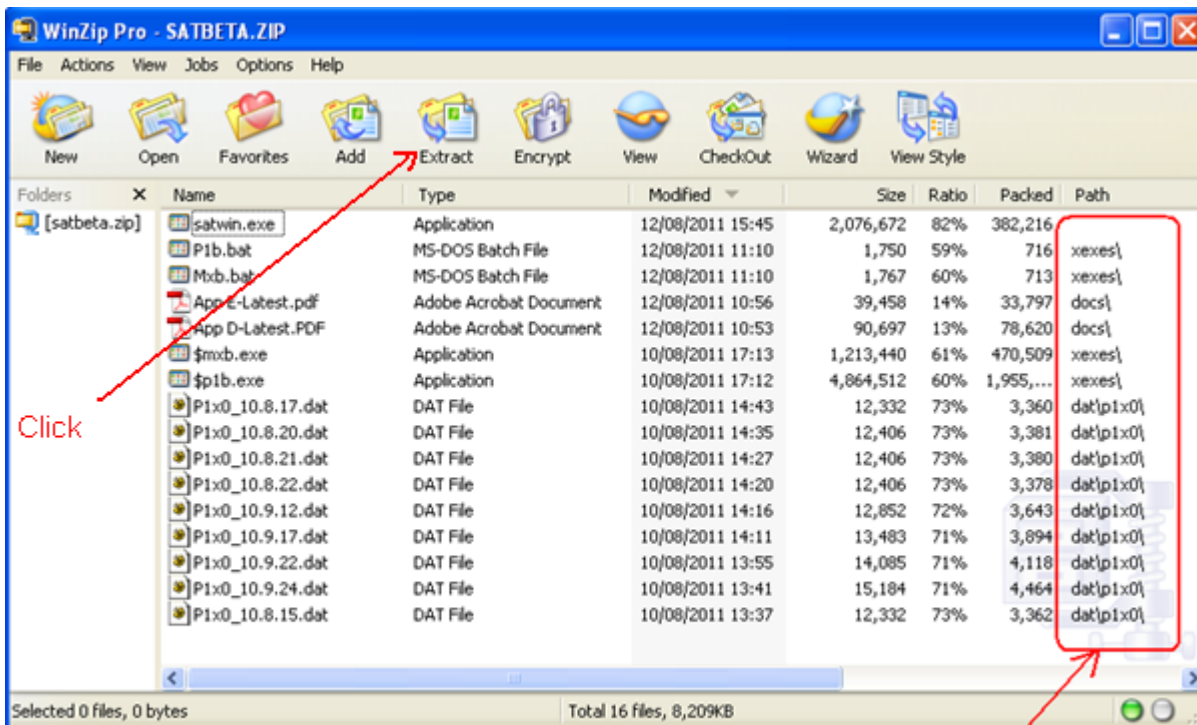


Beta Release Installation Instructions

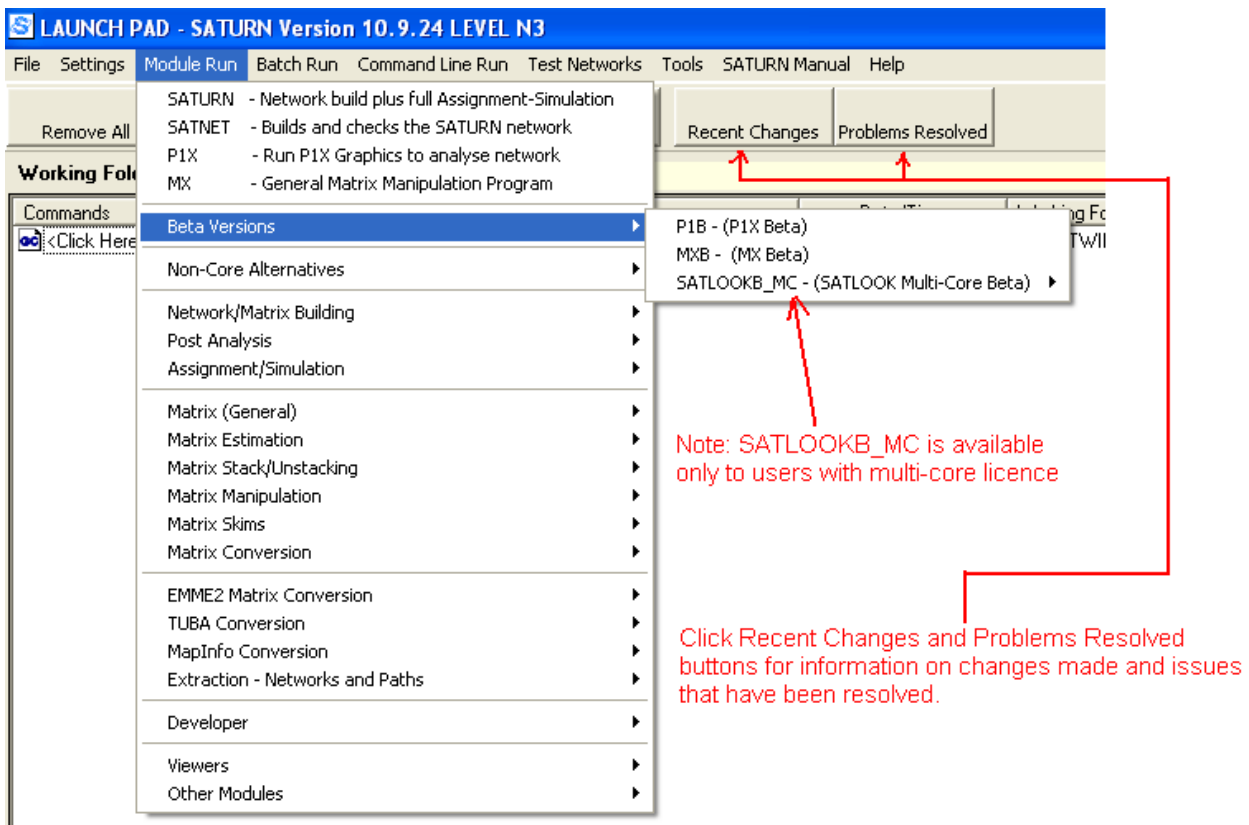
All Users

1. Download the file **SATBETA.ZIP** into the folder where SATURN v10.9.24 is currently installed.
2. Double-Click **SATBETA.ZIP** to open **WINZIP** then click **Extract** from the **WINZIP** Toolbar.



Subfolders where respective files will be extract to

3. The action in 2 should open the **Extract** dialog box below. The “**Extract To**” folder should point to the folder where SATURN v10.9.24 is installed. Click **Extract** button to automatically unzip the contents of **SATBETA.ZIP** into the respective subfolders (highlighted above).



Multi-core Licence Users

In addition to the above, multi-core licence users should download the file **MCSW_BETA.ZIP** and unzip the contents into the subfolder **XEXES** where SATURN v10.9.24 is currently installed.

Using the Beta Release

1. After installation is complete, you can access the beta release from SATWIN Front-end through "Module Run" → "Beta Versions" sub menu
2. From SATWIN toolbar, click "**Recent Changes**" button for information on changes made and "Problems Resolved" button for issues that have been resolved.

Note: SATLOOK Multi-core Beta is available only to licensed multi-core users (and provided they have installed **MCSW_BETA.ZIP**)

If you experience any problems, please contact SATURN support at saturnsoftware@atkinsglobal.com